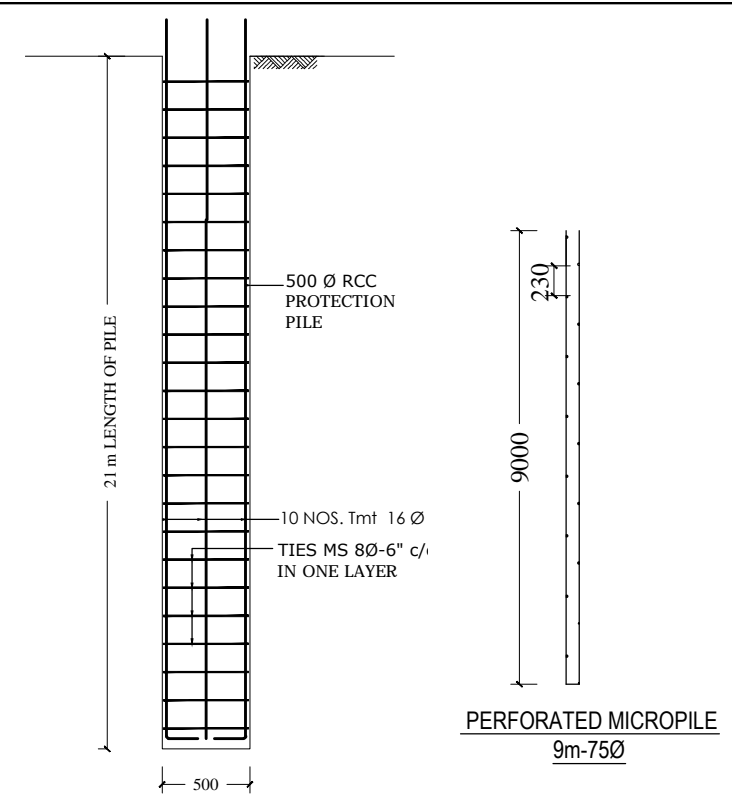
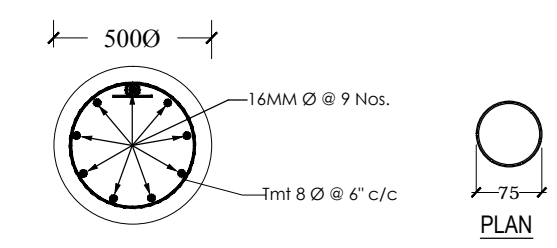


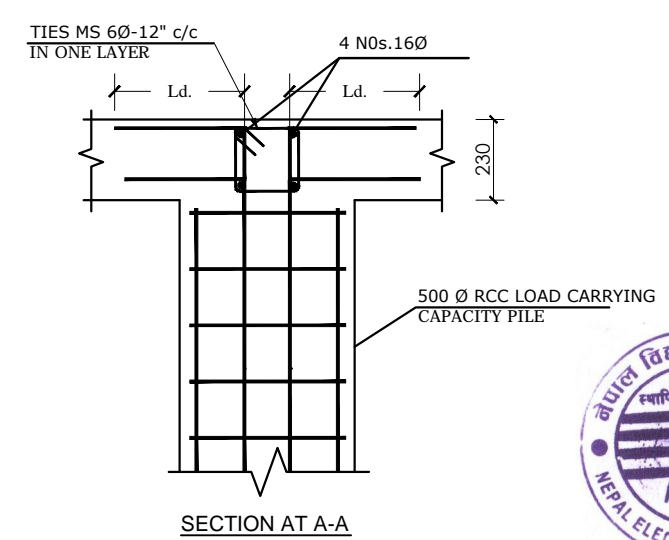
PROTECTION AND MICRO PILE LAYOUT PLAN



PERFORATED MICROPILE  
9m-75Ø



TYPICAL RCC PILE DETAIL (M20)  
PROTECTION PILE

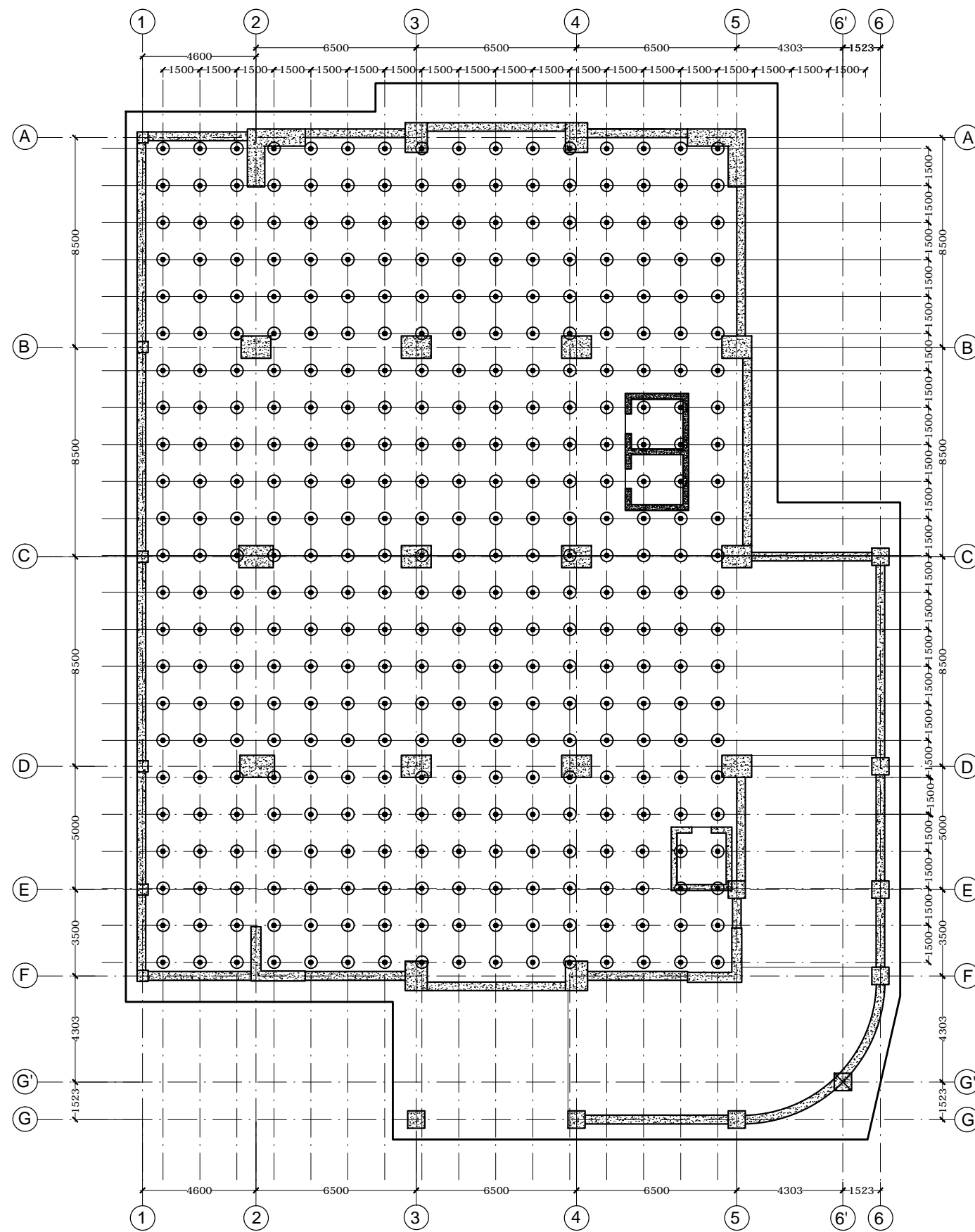


SECTION AT A-A

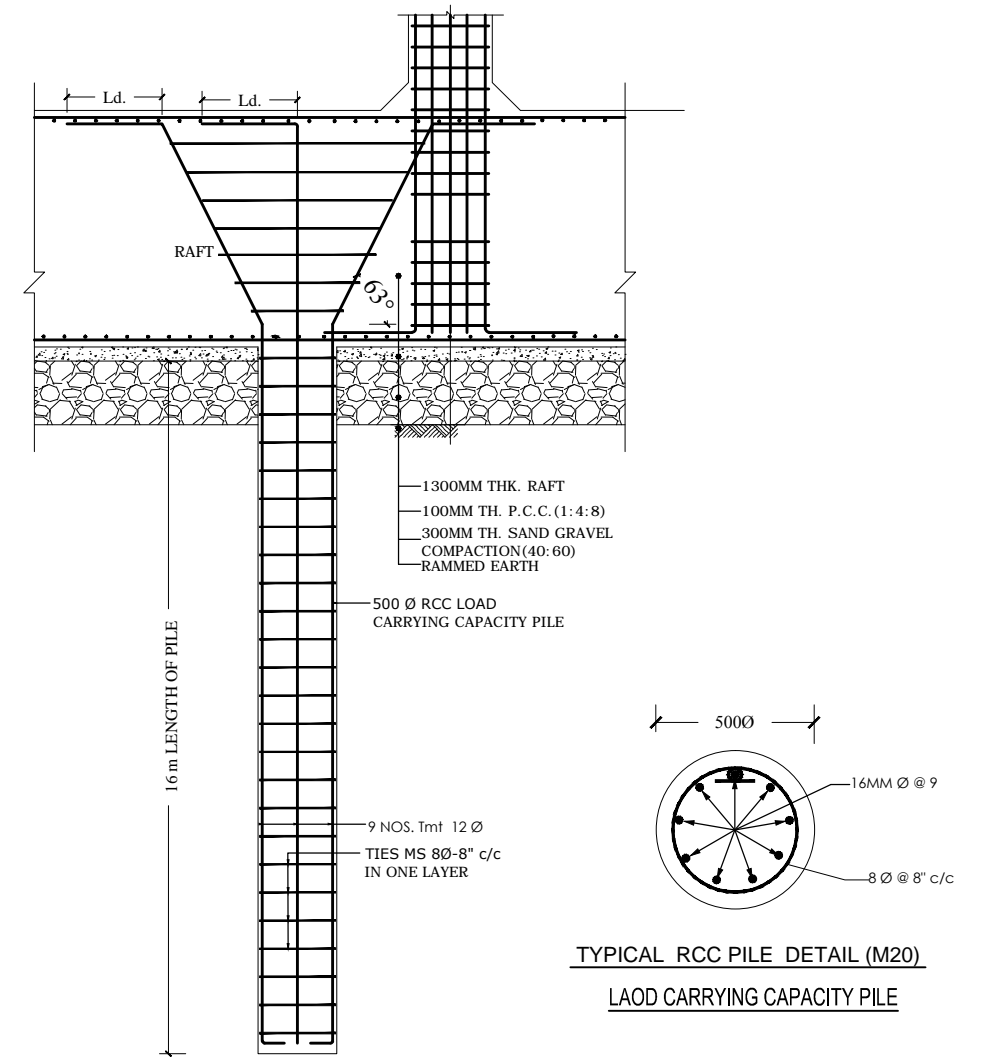


For Tender Purpose Only  
Date : February, 2018

<p><b>NEPAL ELECTRICITY AUTHORITY</b> ENGINEERING SERVICES DIRECTORATE BUILDING AND PHYSICAL INFRASTRUCTURE CONSTRUCTION PROJECT</p>	<p>BDA NEPAL P. LTD. JV INNOVATIVE CREATERS JV NRB &amp; ASSOCIATES 467-ICHHUNADI, BALUWATAR, KATHMANDU</p>	<p><b>CORPORATE OFFICE BUILDING</b></p>	Name	Name	Title	Scale	Sheet No.
			Drawn by: Shailesh R. Sthapit	Reviewed by: I. L. Shrestha B. R. Prajapati	<p><b>Site Protection &amp; Protection Pile Details</b></p>	<p>1:100</p>	<p>COB/SD 1</p>
			Checked by: Ujjwal Man Shakya	Approved by: G. M. Joshi			

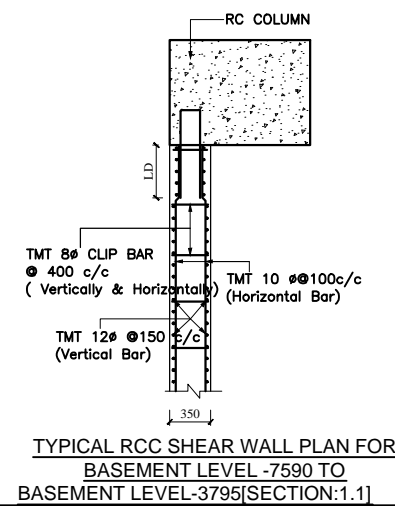


PILE LAYOUT PLAN

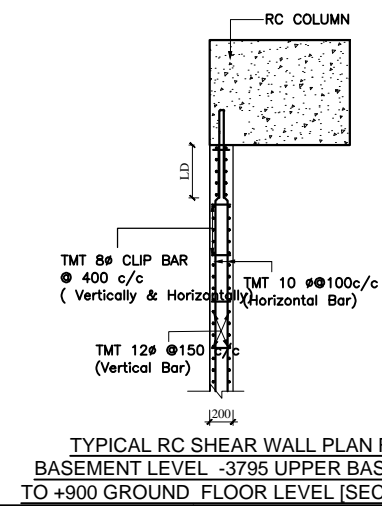


TYPICAL RCC PILE DETAIL (M20)  
LOAD CARRYING CAPACITY PILE

RCC PROTECTION PILE NOS.:208  
PERFORATED MICRO PILE NOS.:194  
LOAD CARRYING CAPACITY PILE NOS. :368



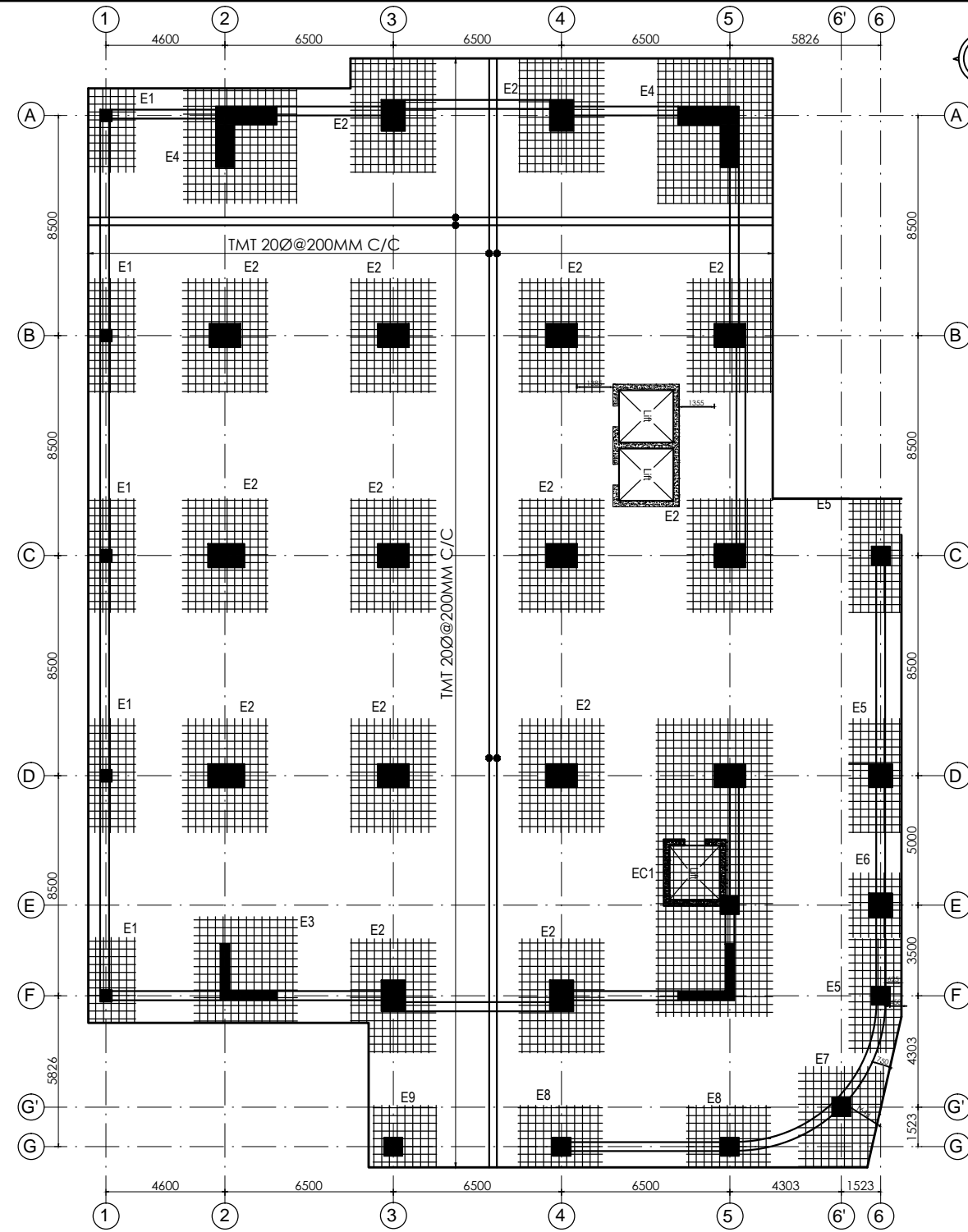
TYPICAL RCC SHEAR WALL PLAN FOR  
BASEMENT LEVEL -7590 TO  
BASEMENT LEVEL -3795 [SECTION:1.1]



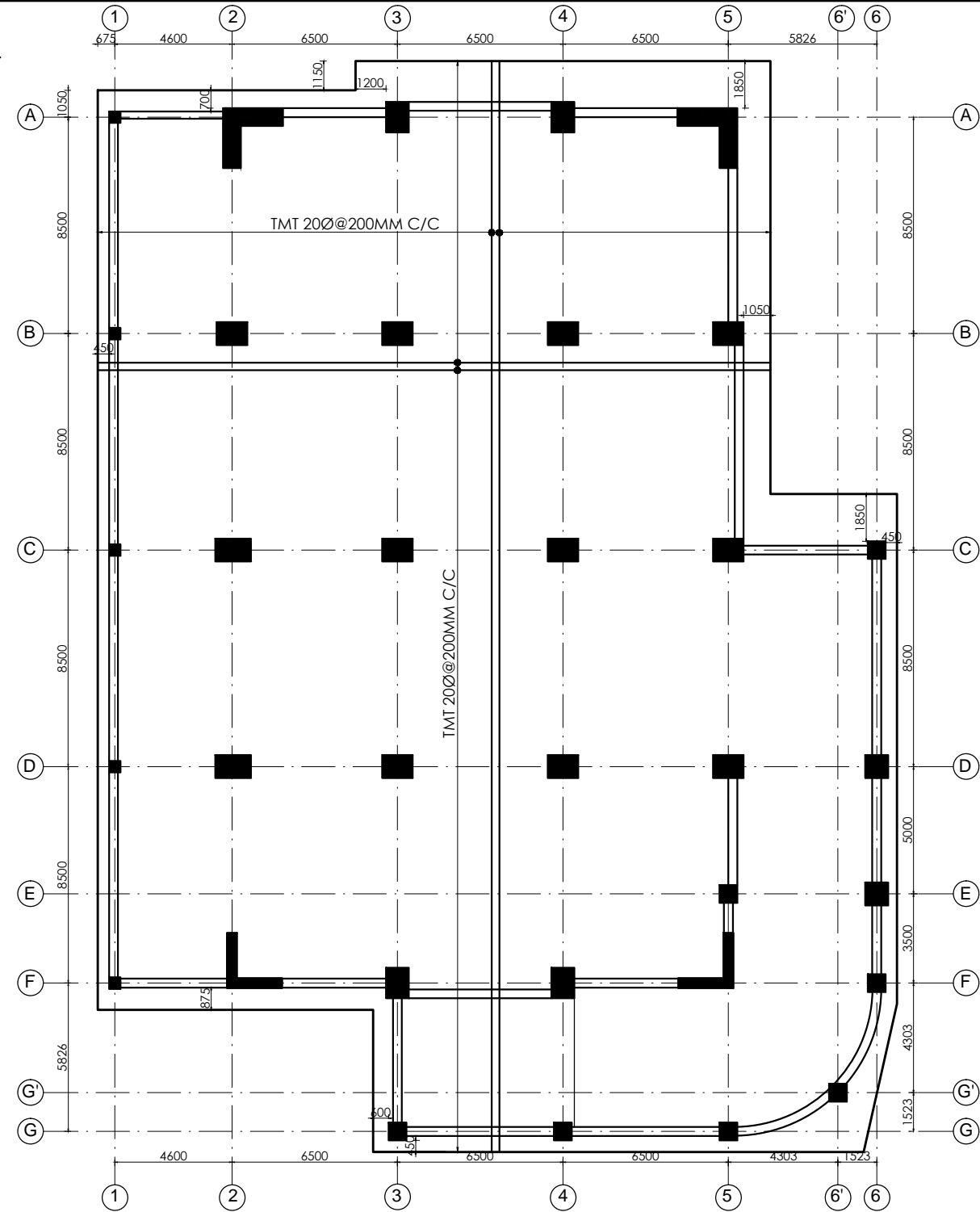
TYPICAL RC SHEAR WALL PLAN FOR  
BASEMENT LEVEL -3795 UPPER BASEMENT  
TO +900 GROUND FLOOR LEVEL [SECTION:2.2]

For Tender Purpose Only  
Date : February, 2018





RAFT & RAFT SLAB BOTTOM REINFORCEMENT LAYOUT PLAN



RAFT SLAB TOP REINFORCEMENT LAYOUT PLAN

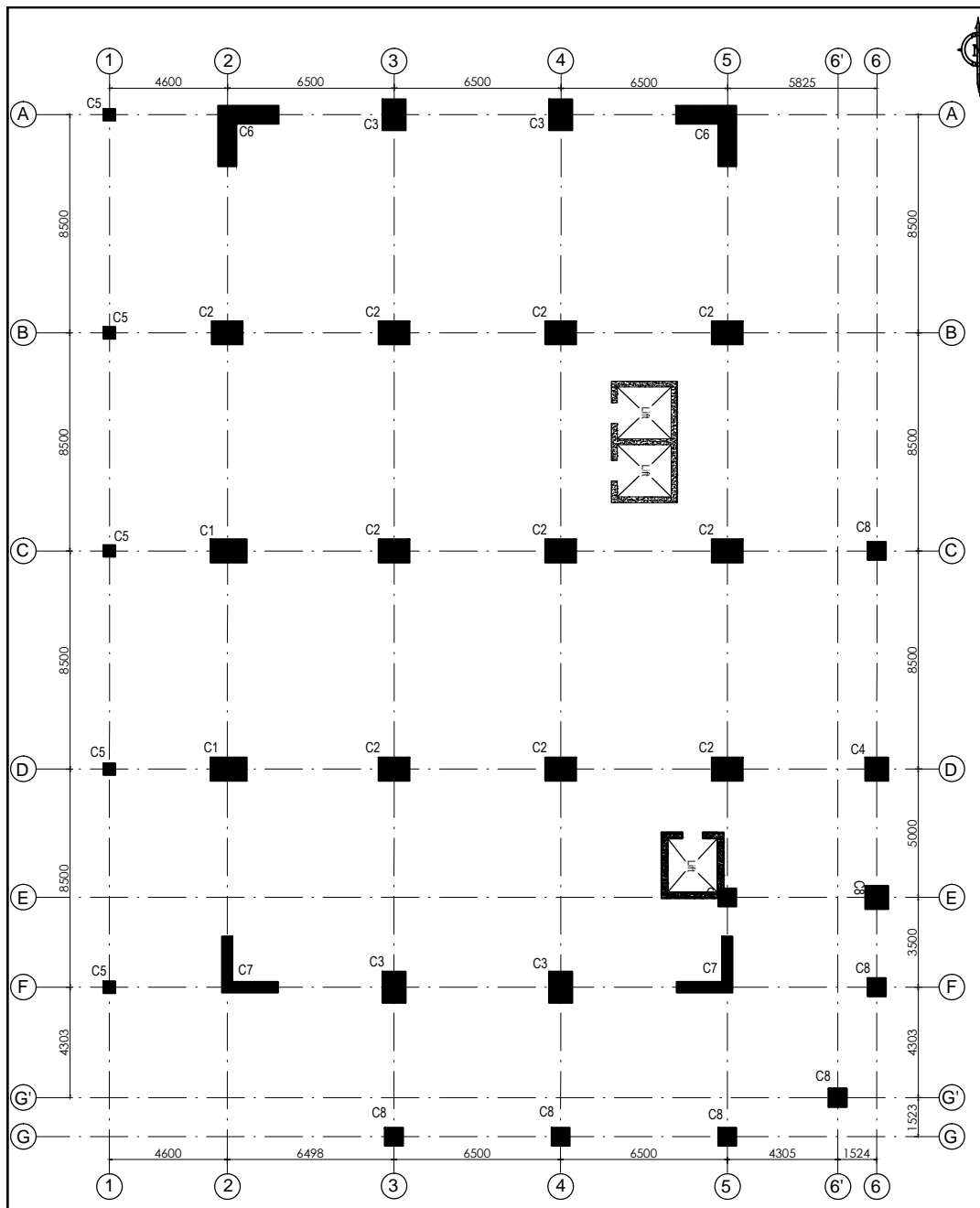
REINFORCEMENT SCHEDULE

Sno.	Description	Sym.	Size LxB (mm)	Bar Distribution
1	EXTRA BAR	E1	4400 X 1825	TMT 20Ø @ 200mm c/c
2		E2	4400 X 3300	TMT 20Ø @ 200mm c/c
3		E3	4100 X 4400	TMT 20Ø @ 200mm c/c
4		E4	5600 X 4400	TMT 20Ø @ 200mm c/c
5		E5	4400 X 2025	TMT 20Ø @ 200mm c/c
6		E6	2500 X 2025	TMT 20Ø @ 200mm c/c
7		E7	3900 X 3200	TMT 20Ø @ 200mm c/c
8		E8	3300 X 2400	TMT 20Ø @ 200mm c/c
9		E9	2500 X 2400	TMT 20Ø @ 200mm c/c
10		EC1	6800 X 1825	TMT 20Ø @ 200mm c/c
11		EC2	11500 X 4500	TMT 20Ø @ 200mm c/c

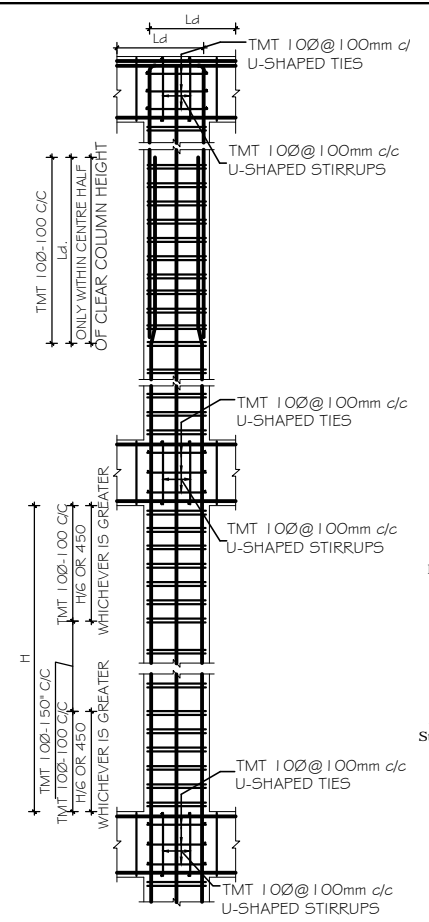


For Tender Purpose Only  
Date : February, 2018

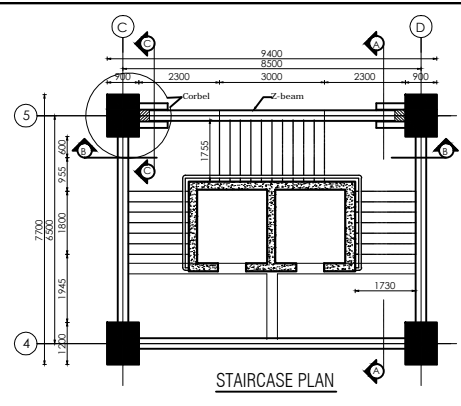




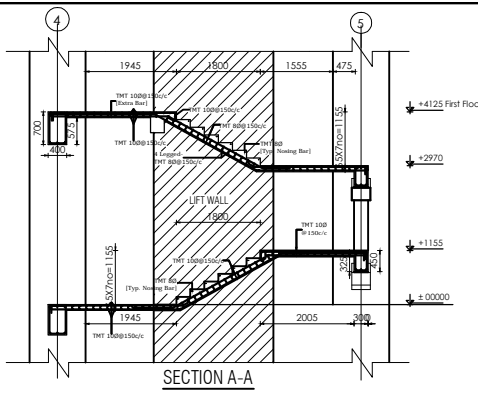
**COLUMN LAYOUT PLAN**  
Approximate raft thickness = 1.9m



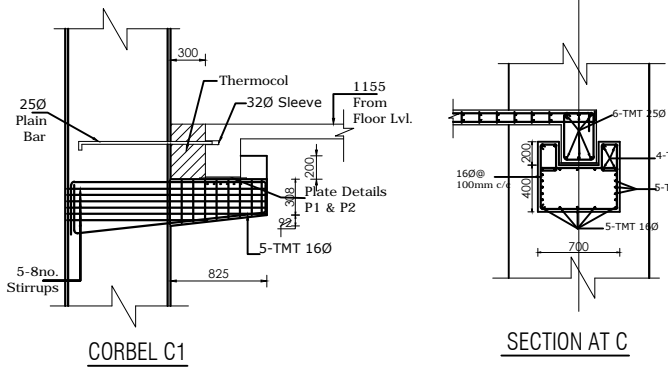
**TYP. LONGITUDINAL COLUMN DETAIL**



**STAIRCASE PLAN**

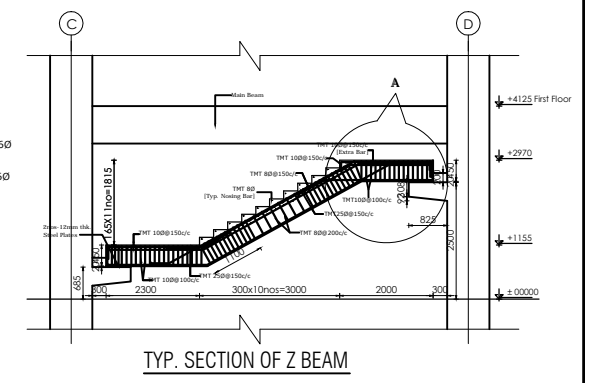


**SECTION A-A**

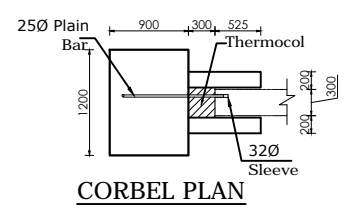


**CORBEL C1**

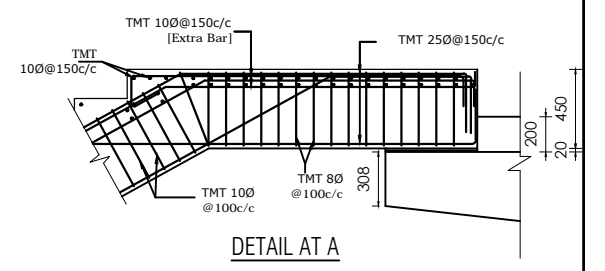
**SECTION AT C**



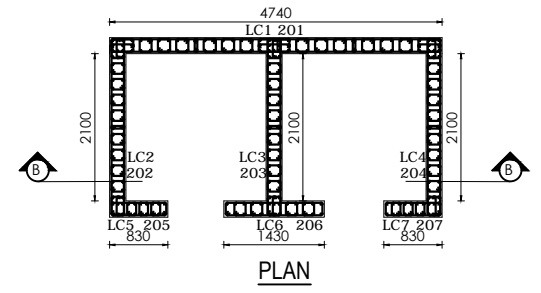
**TYP. SECTION OF Z BEAM**



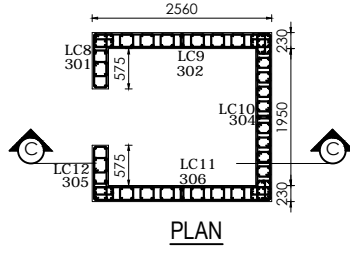
**CORBEL PLAN**



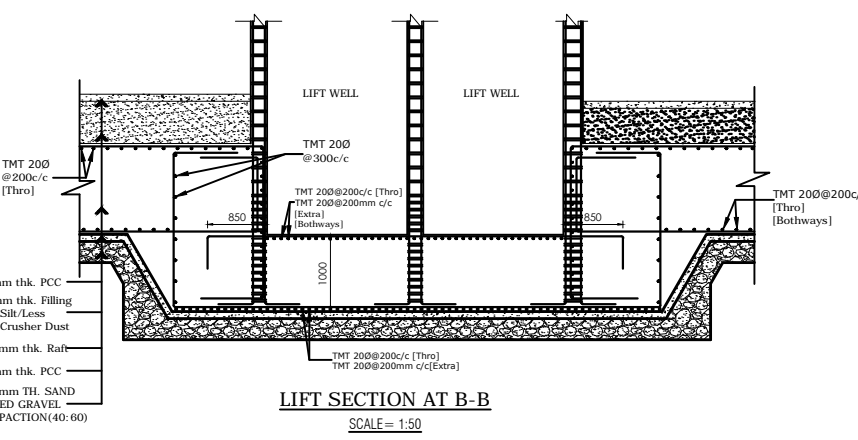
**DETAIL AT A**



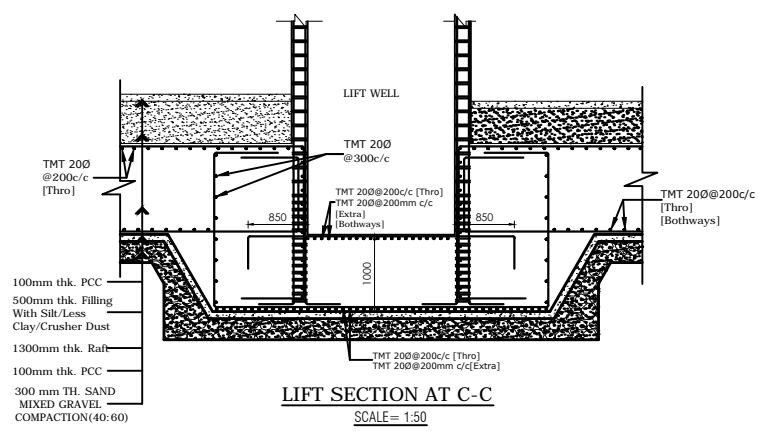
**PLAN**



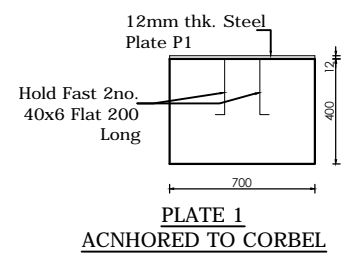
**PLAN**



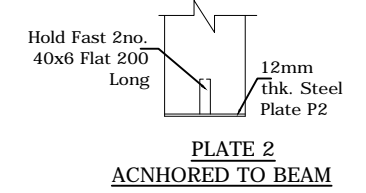
**LIFT SECTION AT B-B**  
SCALE = 1:50



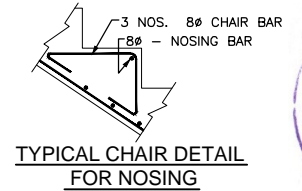
**LIFT SECTION AT C-C**  
SCALE = 1:50



**PLATE 1 ACNHORED TO CORBEL**



**PLATE 2 ACNHORED TO BEAM**



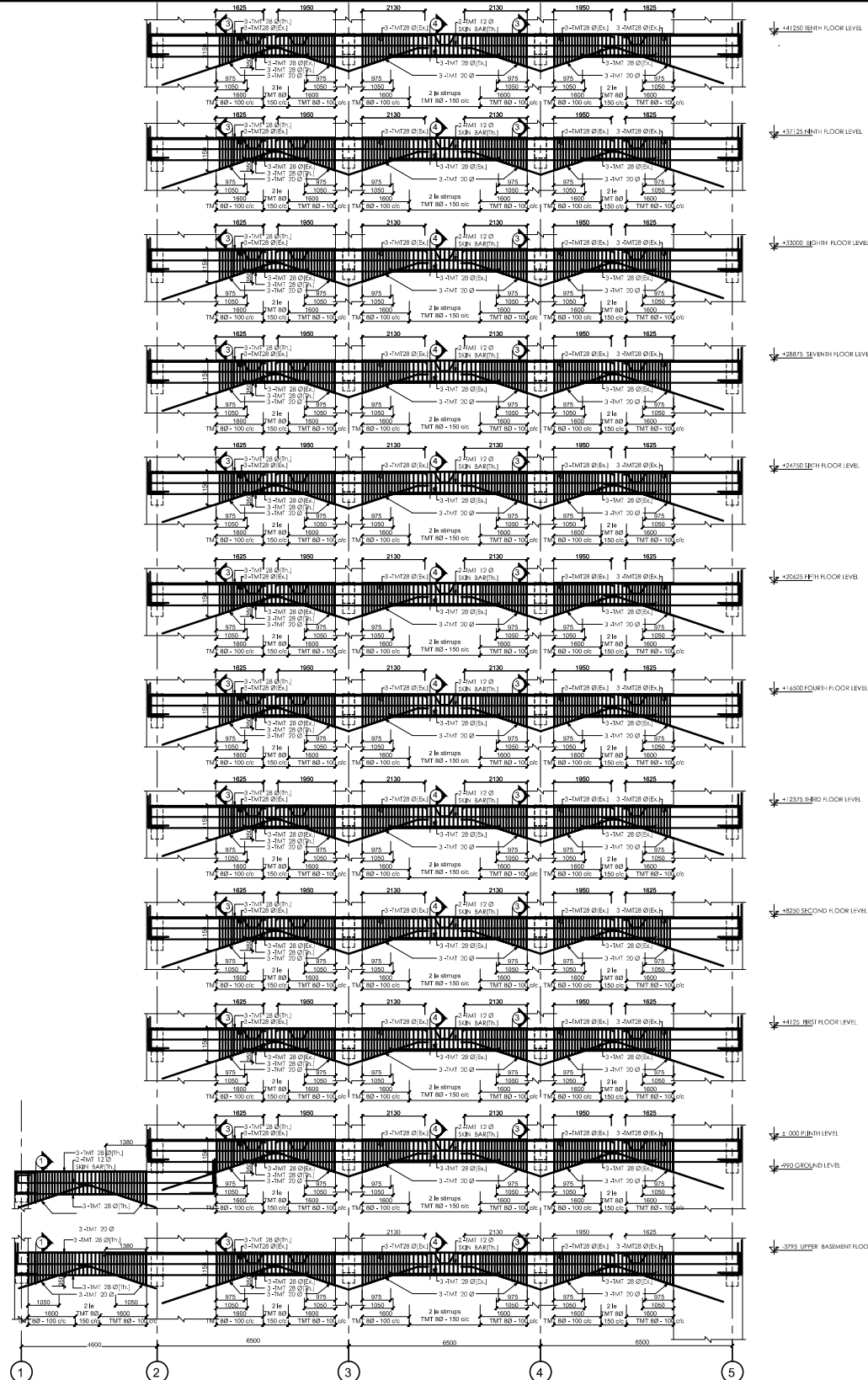
**TYPICAL CHAIR DETAIL FOR NOSING**



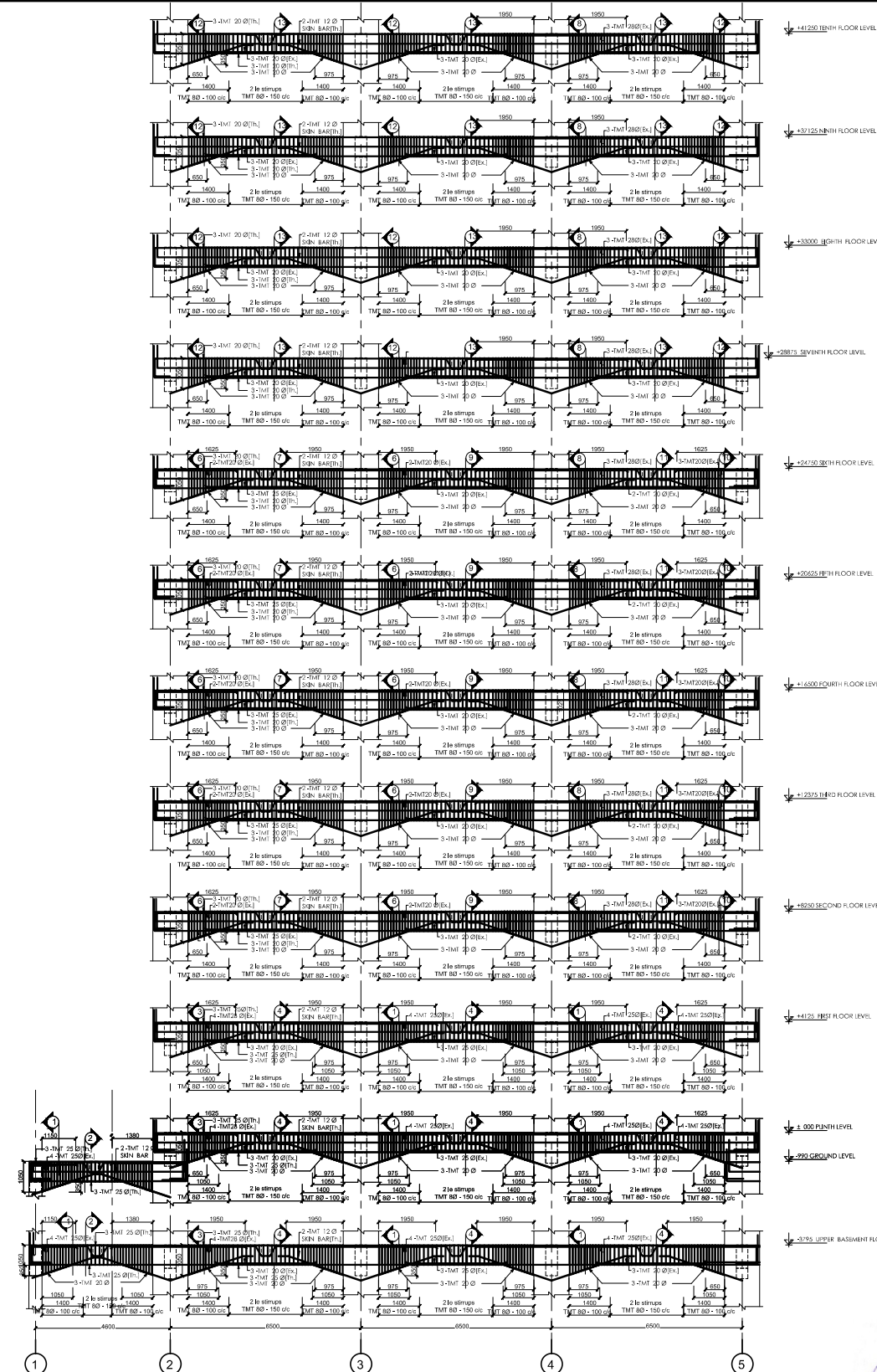
For Tender Purpose Only  
Date : February, 2018

<p><b>NEPAL ELECTRICITY AUTHORITY</b> ENGINEERING SERVICES DIRECTORATE BUILDING AND PHYSICAL INFRASTRUCTURE CONSTRUCTION PROJECT</p>	<p>BDA NEPAL P. LTD. JV INNOVATIVE CREATORS JV NRB &amp; ASSOCIATES 467-ICHHUNADI, BALUWATAR, KATHMANDU</p>	<p>CORPORATE OFFICE BUILDING</p>	Name	Name	<p>Title <b>Column Layout Plan, Lift &amp; Staircase Details</b></p>	<p>Scale 1:100</p>	<p>Sheet No. COB/SD 5</p>
			<p>Drawn by: Shailesh R. Sthapit</p>	<p>Reviewed by: I. L. Shrestha B. R. Prajapati</p>			
			<p>Checked by: Ujjwal Man Shakya</p>	<p>Approved by: G. M. Joshi</p>			

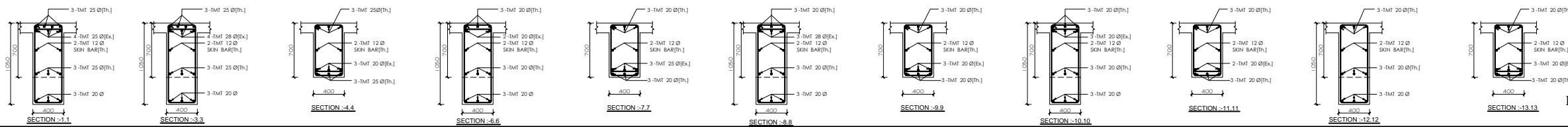




BEAM PROFILE ALONG GRID 'A'



BEAM PROFILE ALONG GRID 'B'



For Tender Purpose Only  
Date : February, 2018

 <b>NEPAL ELECTRICITY AUTHORITY</b> ENGINEERING SERVICES DIRECTORATE BUILDING AND PHYSICAL INFRASTRUCTURE CONSTRUCTION PROJECT	<b>BDA NEPAL P. LTD. JV</b> INNOVATIVE CREATORS JV NRB & ASSOCIATES 467-ICHHUNADI, BALUWATAR, KATHMANDU	<b>CORPORATE OFFICE BUILDING</b> (NEA TOWER)	Name	Name	Title	Scale 1:100 & 1:30	Sheet. No. COB/SD 7
			Drawn by: Shailesh R. Shapit Checked by: Ujjwal Man Shakya	Reviewed by: I. L. Shrestha B. R. Prajapati Approved by: G. M. Joshi	Beam Profile		



For Tender Purpose Only  
Date : February, 2018

**NEPAL ELECTRICITY AUTHORITY**  
ENGINEERING SERVICES DIRECTORATE  
BUILDING AND PHYSICAL INFRASTRUCTURE  
CONSTRUCTION PROJECT

**BDA NEPAL P. LTD. JV**  
INNOVATIVE CREATORS JV  
NRB & ASSOCIATES  
467-ICHHUNADI, BALUWATAR, KATHMANDU

**CORPORATE OFFICE BUILDING**  
(NEA TOWER)

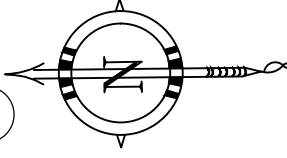
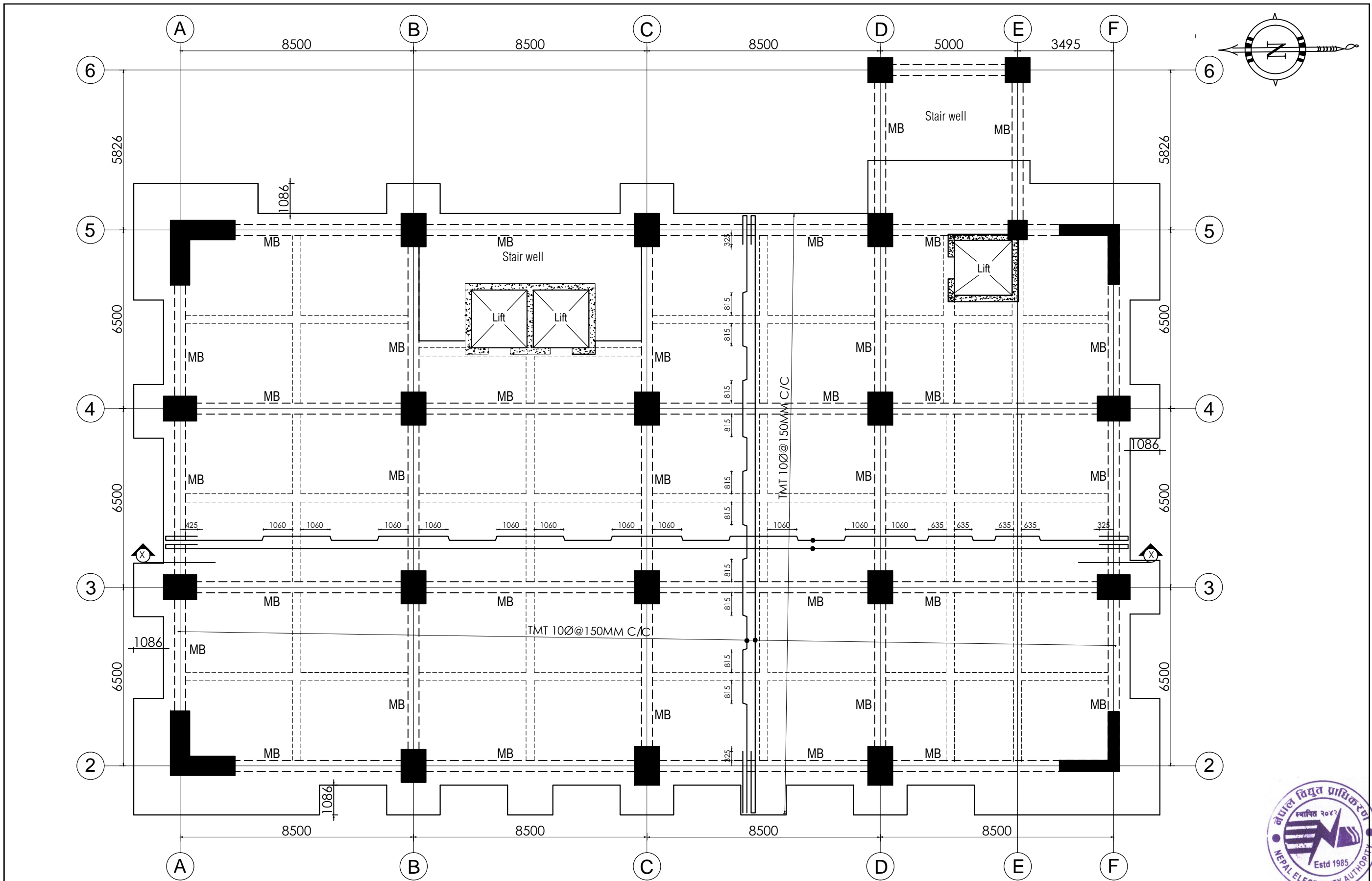
Name  
Drawn by: Shailesh R. Shapit  
Checked by: Ujjwal Man Shakya

Name  
Reviewed by: I. L. Shrestha  
Approved by: G. M. Joshi

Title  
Beam Profile

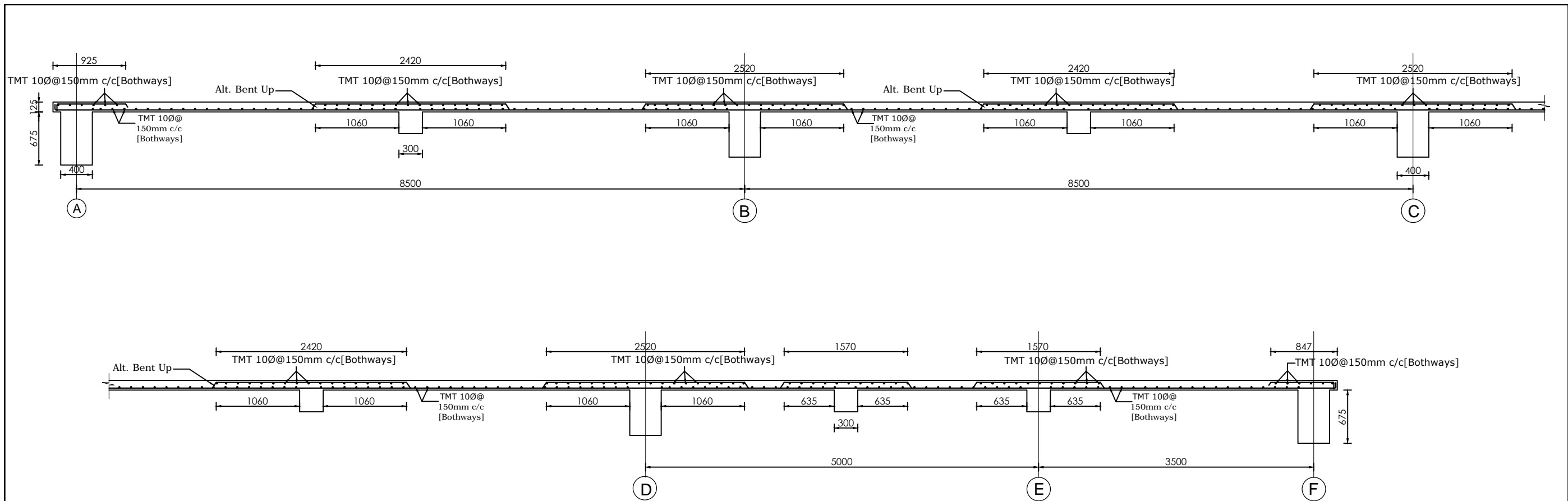
Scale  
1:100  
&  
1:30

Sheet No.  
COB/SD  
8

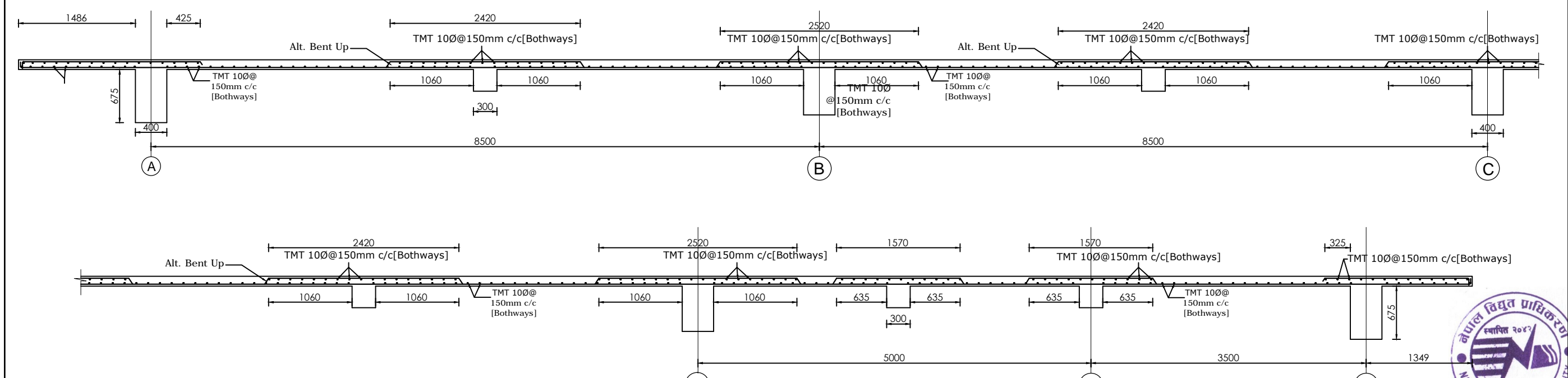


For Tender Purpose Only  
Date : February, 2018

 <b>NEPAL ELECTRICITY AUTHORITY</b> ENGINEERING SERVICES DIRECTORATE <b>BUILDING AND PHYSICAL INFRASTRUCTURE CONSTRUCTION PROJECT</b>	<b>BDA NEPAL P. LTD. JV</b> <b>INNOVATIVE CREATERS JV</b> <b>NRB &amp; ASSOCIATES</b> 467-CHHUNADI, BALUWATAR, KATHMANDU	<b>CORPORATE OFFICE BUILDING</b>	Name	Name	<b>Title</b> Typical Slab Reinforcement & Beam Layout Plan	<b>Scale</b> 1:125	<b>Sheet. No.</b> COB/SD 9		
			Drawn by:	Bishal Dangol				Reviewed by:	Not Applicable
			Checked by:	Ujjwal Man Shakya				Approved by:	G. M. Joshi




SECTION AT X-X



SECTION AT Y-Y



For Tender Purpose Only  
Date : February, 2018

 <b>NEPAL ELECTRICITY AUTHORITY</b> ENGINEERING SERVICES DIRECTORATE <b>BUILDING AND PHYSICAL INFRASTRUCTURE CONSTRUCTION PROJECT</b>	<b>BDA NEPAL P. LTD. JV</b> <b>INNOVATIVE CREATORS JV</b> <b>NRB &amp; ASSOCIATES</b> 467-CHHUNADI, BALUWATAR, KATHMANDU	<b>CORPORATE OFFICE BUILDING</b>	Name	Name	<b>Title</b> Typical Slab Reinforcement & Beam Layout Section	<b>Scale</b> 1:50	<b>Sheet. No.</b> COB/SD 10		
			Drawn by:	Shailesh R. Sthapit				Reviewed by:	Not Applicable
			Checked by:	Ujjwal Man Shakya				Approved by:	G. M. Joshi